

TURTLE TRACTS

INSIDE THIS ISSUE:

Emerald Ash Borer 2

Ash Identification 3

2025 Rates 4

2024 Annual Report 5

NRCS News 6

New Employee 7

Recipe 8

Emerald ash borer found in North Dakota

Concern for ash trees increases as invasive pest discovered in state.



SPOT THE EAB: The metallic, wood-boring beetles are coppery and emerald-green, as the name suggests.

SPECIAL POINTS OF INTEREST:

- > TMSCD Board Meetings are held the third Wednesday of each month at 8:00 a.m. at the USDA Service Center in Bottineau.
- > Board Meetings are open to the public, but please call ahead to make sure meeting dates/times have not changed.
- > New Address:
514 Thompson St. #2
Bottineau, ND 58318-1238.
- > Office Hours: Monday-Friday, 8:00 a.m.-4:30p.m. Closed on Federal Holidays.

Emerald ash borer was found Sept. 4 in North Dakota for the first time. EAB is an invasive, destructive insect that eats the phloem layer of the tree, just under the bark.

Native to Asia, the pest was first discovered in the United States in 2002 in southeast Michigan. It can now be found in the Dakotas, Nebraska and Colorado. The U.S. Forest Service considers it one of the most invasive destructive species in North America.

All North American ash species can become hosts of the EAB, according to North Dakota State University. This includes green, black, Manchurian and white ash.

CONTROL METHODS

Using an Integrated Pest Management system is the best approach to stave off this pest through monitoring and multiple control strategies.

Continued on next page

Stopping the movement of firewood is one of the top cultural control strategies to employ to prevent the spread of EAB. Burn any logs where you purchase them, as larvae can hide under the bark. NDSU states that the spread of EAB in Michigan was due largely to firewood.

Removing infected or diseased trees to prevent larvae from spreading is another cultural control. Parasitoids are an option to treat pests, as the EAB has no natural predators aside from woodpeckers. Research is being conducted to discover any naturally occurring predators. A native wasp has been found in Michigan, and its habits are being researched.

Insecticide treatment of trees is available, but only individual trees can be treated rather than a forest. However, these treatments can be expensive and must be continued throughout the tree's life, so owners must consider if treatment or removal is best.

The most effective product for homeowners is one that is injected into the trunk of the tree. This is often done by professionals, and the cost can vary widely.

Before treating any ash trees, homeowners should consider if their trees are in danger of being infected. NDSU does not recommend treating trees unless EAB has been found within 15 miles, as the pest only spreads about a half-mile annually on its own.

External signs of EAB can often look like other ash diseases, so official confirmation of their presence should be confirmed with officials. The North Dakota Forest Service, North Dakota Department of Agriculture or NDSU Extension should be contacted if you suspect EAB has moved into your land.

Find more information on EAB from [NDSU Extension](#).



Emerald Ash Borer, adult



Emerald Ash Borer adult compared with a penny

Emerald Ash Borer

~ 1/2"



LOOKALIKE: Tiger Beetle

DO YOU SEE...

big eyes? →

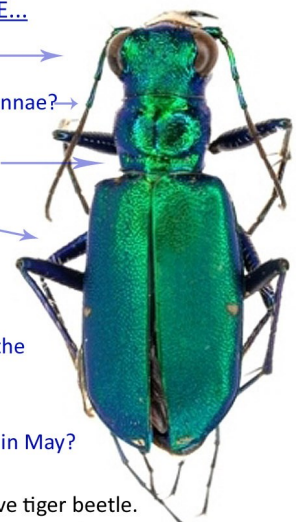
longish antennae? →

a "waist"? →

long legs? →

a green bug
running on the
ground?

a green bug in May?



If yes, it is likely the native tiger beetle.
Please do not make a report.

Ash Tree Identification

Branch and Bud Arrangement

Buds and branches normally are found directly across from each other and not alternating along the stem. Note, however, that buds and branches may die; therefore, not every branch will have an opposite counterpart.



Leaves:

Ash trees have compound leaves, composed of five to 11 leaflets. Leaflet margins are serrated and leaflets are opposite each other, except for the single leaflet at the tip.



Bark:

On young trees, bark is relatively smooth and may have an orange cast. As trees age, the bark becomes gray and develops diamond shaped ridges.



Seeds:

Individual seeds are held in samaras that each have a single wing. Seeds occur in clusters that may stay on the tree well into winter.

Rate Schedule for Services Offered by Turtle Mountain Soil Conservation District

Grass Seeding:* \$ 35.00/acre (\$350.00 Minimum)
(\$500.00 Minimum Out of District)

No-Till Drill Rental: * \$350.00 (0-20 acres)
\$20.00/acre (over 20 acres)

Broadcasting/Harrowing :* \$35.00/hr. plus seed cost
(In-between tree rows)
**1.50/mile equip. transportation fee
(roundtrip) for all grass seeding*

.....
Machine Tree Planting (Trees included): \$ 35.00/100ft. (\$200.00 Minimum)

Hand Plant Trees: \$ 2.00/each (\$2.50 for container)
\$ 40.00/bundle

Hand-Planting (District): \$ 5.00/per tree, plus tree cost

Tree Tubes: 5'--\$5.00/tube--\$6.00 tube & stake
6'--\$6.00/tube--\$7.00 tube & stake
\$ 1.50/stake

.....
Weed Barrier Installation:* \$ 70.00/100ft (\$250.00 Minimum)

Out of District:* \$ 80.00/100ft (\$350.00 Minimum)

1.50/mile charge if site is not ready for trees and weed barrier

Weed Barrier (cut to order): \$ 2.00/ft.
(\$175.00/roll)

Ground Staples: 5 for \$10.00/ \$60.00 box

.....
Tree Row Cultivation (Tilling): \$ 85.00/hr. (\$200.00 Minimum)
(\$300.00 Minimum Out of District)

Site Mowing: \$ 75.00/hr. (\$200.00 Minimum)
(\$300.00 Minimum Out of District)

Liquid Plant Skydd: \$ 25.00/quart

**Rates are subject to change
12/18/2024*

2024 Turtle Mountain SCD Annual Report

January

- NDASCD Annual Dues Paid
- Reorganization of the Board/Oath of Office
- New 2024 Annual Plan
- Winter Newsletter Published

February

- Published 2022 Annual Report
- 2024 Mill Levy/Budget Completed
- Tree & Shrub Orders
- Joint Meeting with Mouse River SCD

March

- Finalized Tree/Fabric Plans
- Attended Tree Promotional Meeting
- Spring Newsletter Published

April

- 2024 Achievement Winner-Bruce & Sara Knudson
- District Equipment Ready To Go!
- Finalized Tree Orders
- Tree and Grass Seeding Site Checks



May

- 2023 Financial Reports completed and sent to State Auditor
- Spring Site Prep./Tilling Starts
- Tree Planting Starts
- District's First Website Up & Running
- Spring Grass Seeding Window Begins

June

- Tree planting Continues
- Weed Barrier Installation Begins
- Warm/Cool Grass Seedings

2024 Numbers at a Glance:

- Tree Plantings-21,675'
- Weed Barrier/Fabric Installation-23,550'
- No-till Drill Grass Seedings-78.5 acres

Thank you to all we have worked with this past season, and we look forward to yet another year!

July

- Weed Barrier/Fabric Installation Completed.
- Summer Newsletter Published
- On-site Tree Plans
- Start Planning for Winter Workshops

August

- Grass Seeding Window Begins
- Tree/Shrub Plantings-Assessments
- Outdoor Heritage Grant Applications
- NDFS Cost-Share Tree Planning

September

- Tree Plans for 2025
- Fall Site Preparation and Onsite Visits
- Equipment Inventory
- Tree/Shrub Planting Assessments continue

October

- Late fall/Dormant Grass Seeding
- 7th Grade Conservation Tour
- Tree Plans for 2025
- Fall Newsletter
- Assisted NRCS with EQIP & CSP Programs/Contracts

November

- NDASCD Convention
- 2025 Tree Orders
- Contribution Agreement with NRCS
- 2025 Rates of Services
- Fall/Dormant Grass Seeding Completed

December

- TMSCD-5 Meetings Held
- End of Year Reports
- Merry Christmas and Happy New Year!

NRCS NEWS

2025 Conservation Stewardship Program (CSP) signup ends February 28th 2025.

North Dakota NRCS has set the next batching period deadline for the Conservation Stewardship Program (CSP) Classic and the CSP-IRA Program to February 28, 2025, for applications to be considered for funding in Fiscal Year (FY) 2025.

CSP is a voluntary program for working agricultural lands. It is the largest conservation program in the United States with 70 million acres of productive agricultural and forest land enrolled. Thousands of farmers and ranchers have made the choice to voluntarily enroll in the program because it helps them enhance natural resources and improve their farm/ranch operation.

CSP is available for those that are actively involved in agriculture production. Applicants are able to select practices and enhancements that best suit their farm or ranch operation.

To apply for CSP, please stop by your local Natural Resources Conservation Office today or click here for more information: <https://www.nrcs.usda.gov/programs-initiatives/csp-conservation-stewardship-program/north-dakota/conservation-stewardship>



New Employee

My name is Heather Vestre, and I recently accepted the position of Farm Bill Specialist. I grew up on a ranch in Mountrail County and envisioned opening a flower shop and landscape company. To pursue this goal, I attended college at Dakota College at Bottineau, obtaining degrees in Turf Management, Arboriculture/Urban Forestry, Greenhouse Technology, and Landscape Design. During my time in college, I met my husband, Nick, and made the decision to stay in Bottineau to build our life together. I am enthusiastic about this new role, as it presents an opportunity to contribute positively to my community while applying my educational background.

As a family, Nick and I are actively involved in our son Donovan's life, who keeps us engaged with a variety of extracurricular activities such as basketball, archery, 4H, skiing, skating, and Boy Scouts, along with supporting him and most of his animal dreams. In our leisure time, we take pleasure in hunting, fishing, hiking, camping, and spending quality time with our array of animals.



Welcome Heather!

CSP Signup ends February 28th, 2025!

Have your tree/shrub orders in by March 1st!

Environmental Quality Incentives Program (EQIP)-Migratory Bird Resurgence Initiative (MBRI) in North Dakota ends February 7th.

The sign-up period for the Environmental Quality Incentives Program (EQIP)-ACT NOW in North Dakota ends February 14th

**Don't
Forget!**

Kari Beckman -District Manager

Linda Tooke -District Technician

**514 Thompson St. #2
Bottineau, ND 58318-1238**

Phone: (701) 228-3611 ext. 3

**Email: kari.beckman@nd.nacdnet.net
linda.tooke@nd.nacdnet.net**

Or Current Resident

NRCS & BOTTINEAU FIELD OFFICE STAFF

Amy Sand -District Conservationist

Whitney Huesers-CDU Supervisor

Hailey Neubauer -Biologist

Colette Guariglia -Wetland Specialist

Steph Baker-Soil Conservationist

Heather Vestre-Farm Bill Specialist

BOARD MEMBERS

Tyler Neubauer -Chairman

Bruce Knudson -Vice Chairman

Mike Erdman

Brent Moum

Check out our new website!

www.tmscd.net

Chicken Jalapeno Popper Chili

Ingredients:

2 Tbsp butter

2 Tbsp all-purpose flour

3 1/2 cups chicken broth

1 cup half-and-half

1 rotisserie chicken skin removed, meat pulled off bones and chopped

2 (15oz) cans white kidney beans, rinsed and drained

3 fresh jalapenos, seeds removed & diced

2 Tbsp dried minced onion flakes

1/4 tsp garlic powder

1/2 tsp salt

1/2 tsp black pepper

1 (8oz) block cream cheese

Instructions:

In a Dutch oven, melt butter and stir in flour. Cook for 2 minutes. Gradually whisk in chicken broth and half-and-half. Bring to a boil and cook for 2 minutes, until thickened. Add remaining ingredients and cook for an additional 10 to 15 minutes, stirring occasionally. Garnish with additional bacon, jalapenos and pepper jack cheese, if desired and enjoy!

